

SITE SCHEDULE - "Y"				
DESIGN ID	COUNT	DESCRIPTION	RESP.	COMMENTS
X0015	2	VEHICLE LOOP DETECTION	SB/LL	BY HME. CONDUIT MUST BE INSTALLED PRIOR TO PAVING; GC TO COORDINATE WITH PAVING CONTRACTOR
EXTERIOR MENU				
22540	1	MENU BOARD - DT 5 PANEL SQUARE FRAME FREESTANDING - 95X62IN 2415X1575MM - BLACK	SB/SB	SUPPLIER/INSTALLER: REGIONAL SIGNAGE VENDOR
22542	1	MENU BOARD - DT PRE MENU SQUARE FRAME FREESTANDING - 29X61IN 735X1550MM - BLACK	SB/SB	SUPPLIER/INSTALLER: REGIONAL SIGNAGE VENDOR
22546	1	MENU BOARD - DT DIGITAL ORDER SCREEN WITH POST - BLACK	SB/SB	SUPPLIER/INSTALLER: REGIONAL SIGNAGE VENDOR
OTHER				
10163	1	DT WINDOW SHELF - 56IN 1420MM - OBSIDIAN PAPERSTONE	SB/GC	
14095	1	DT WAYFINDING GRAPHIC EXIT ARROW - WHITE	GC/GC	GC TO INSTALL PER SB SPECIFICATIONS
14101	1	DT WAYFINDING GRAPHIC ENTRY ARROW - GREEN	GC/GC	GC TO INSTALL PER SB SPECIFICATIONS
14103	2	BOLLARD NONILLUMINATED SQUARE - FLAT BLACK MT0028	GC/GC	DSA PHOTOTECH; PROVIDED AND INSTALLED BY SIGNAGE VENDOR; LL TO PROVIDE FOOTINGS AS SPECIFIED; RAL7021 BLACK GRET. 10% SHEET EXT.
14323	3	DT WAYFINDING GRAPHIC DIRECTIONAL DOUBLE ARROW - GREEN	GC/GC	REFERENCE PAINT 20512 FOR SPECIFICATIONS
14324	9	DT WAYFINDING GRAPHIC DIRECTIONAL DOUBLE ARROW - WHITE	GC/GC	SEE DETAILS FOR ADDITIONAL INFORMATION; REFERENCE PAINT 20511 FOR SPECIFICATIONS
22543	1	DT ORDER POINT CANOPY SQUARE FRAME - BLACK	SB/SB	SUPPLIER: DT SIGNAGE VENDOR (DSA), INSTALLER: REGIONAL SIGNAGE VENDOR
TK0016	3	BIKE RACK OLYMPIA	SB/GC	OLYMPIA BIKE RACK JASON.BAJOR@FORMS-SURFACES.COM
X0023	2	SIGN - CUSTOM - 5 MINUTE PARKING WITH BOLLARD BASE	GC/GC	FOOTING BY GC, SIGN BY STARBUCKS

EXTERIOR SIGNAGE SCHEDULE - "S"					
DESIGN ID	COUNT	DESCRIPTION	RESP.	BULB	COMMENTS
SIGNAGE - DISK					
13163	1	SIGN - DISK SF ILLUMINATED FLUSH MOUNTED EVOLVED - 48IN 1220MM	SB/SB		
13164	2	SIGN - DISK SF ILLUMINATED FLUSH MOUNTED EVOLVED - 60IN 1525MM	SB/SB		
SIGNAGE - DRIVE THRU					
14091	4	SIGN - DT DIRECTIONAL EXIT SIGN ILLUMINATED ARROW SERIES - 46IN 1170MM	SB/SB		GC TO COORDINATE WITH SB VENDOR; SUPPLIER/INSTALLER: REGIONAL SIGNAGE VENDOR
14099	2	SIGN - DRIVE THRU ILLUMINATED ARROW SERIES FLUSH MOUNTED - RH - 48IN 1220MM	SB/SB		
14104	3	SIGN - DT DIRECTIONAL ILLUMINATED ARROW SERIES WITH LOGO - 46IN 1170MM	SB/SB		GC TO COORDINATE WITH SB VENDOR; SUPPLIER/INSTALLER: REGIONAL SIGNAGE VENDOR
14108	1	SIGN - MONUMENT DRIVE THRU ILLUMINATED ARROW SERIES	SB/SB		
22544	1	SIGN - DT CLEARANCE BAR SQUARE FRAME FREESTANDING - BLACK AND DARK GREEN	SB/SB		GC TO COORD. W/ SB VENDOR
SIGNAGE - WORDMARK					
18507	1	SIGN - WORDMARK STARBUCKS ON RACEWAY - 20IN 510MM	SB/SB		WHITE LETTERS

GENERAL NOTES

- A. REFER TO EXTERIOR ELEVATIONS ON SHEET A201 FOR BUILDING SIGNAGE LOCATION AND DESIGN ID. REFER TO ELECTRICAL PLANS FOR ELECTRICAL REQUIREMENTS.
- B. LANDSCAPING TO BE PROVIDED PER ZONING CODE AND SUSTAINABILITY REQUIREMENTS.
- C. DRIVE-THRU EQUIPMENT INCLUDING VEHICLE DETECTION LOOP, WIRELESS COMMUNICATION AND MONITORS SHALL BE COORDINATED BY STARBUCKS CONSTRUCTION MANAGER. REFER TO ELECTRICAL DRAWINGS FOR ADDITIONAL REQUIREMENTS.
- D. LANDLORD TO PROVIDE 6" (160MM) THICK CONCRETE PAVING THE LENGTH OF THE DRIVE-THRU LANE, EXTENT TO INCLUDE DRIVE-THRU ENTRY POINT THROUGH WINDOW STANDING PAD.
- E. GENERAL CONTRACTOR TO APPLY CONCRETE SEALER TO ALL EXTERIOR CONCRETE PATIO AND WALKWAY SURFACES.
- F. GENERAL CONTRACTOR TO VERIFY ALL EXISTING ELEVATIONS AND BUILDING CONDITIONS IN FIELD PRIOR TO START OF CONSTRUCTION.
- G. PROVIDE DETECTABLE WARNING (IF APPLICABLE PER LOCAL CODE) AT TRANSITION FROM SIDEWALK TO DRIVE AISLE.
- H. ACCESSIBLE PARKING SPACES AND ACCESS AISLES SHALL HAVE SURFACE SLOPE NOT TO EXCEED 2% IN ALL DIRECTIONS.
- I. REFER TO ELECTRICAL DRAWINGS FOR SITE RELATED ELECTRICAL BASES.
- J. SCRAPE AND REPAINT ALL EXISTING PAINTED SITE FEATURES, INCLUDING, BUT NOT LIMITED TO CURBS, BOLLARDS, RAILINGS AND SITE LIGHTING BASES.
- K. SEE SHEET A002-A005 FOR ARCHITECTURAL SITE DETAILS.

KEYED NOTES

1. LANDSCAPE AREA.
2. ACCESSIBLE PATH OF TRAVEL TO PUBLIC WAY.
3. CANOPY SHOWN DASHED FOR REFERENCE.
4. OUTDOOR SEATING. SEE FF&E PLAN AND SCHEDULES.
5. BUILDING SIGNAGE. SEE ELEVATIONS AND SCHEDULES FOR DETAILS.
6. WAYFINDING SIGNAGE. SEE SCHEDULES FOR DETAILS. LANDLORD TO FURNISH AND INSTALL CONCRETE FOOTINGS AND ELECTRICAL CONDUIT.
7. "THANK YOU/EXIT ONLY" SIGNAGE. SEE SCHEDULES FOR DETAILS. LANDLORD TO FURNISH AND INSTALL CONCRETE FOOTINGS AND ELECTRICAL CONDUIT.
8. CLEARANCE BAR. SEE SCHEDULES FOR DETAILS. LANDLORD TO FURNISH AND INSTALL CONCRETE FOOTINGS AND ELECTRICAL CONDUIT.
9. PREVIEW BOARD. SEE SCHEDULES FOR DETAILS. LANDLORD TO FURNISH AND INSTALL CONCRETE FOOTINGS AND ELECTRICAL CONDUIT.
10. ORDER POINT WITH CANOPY. SEE SCHEDULES FOR DETAILS. LANDLORD TO FURNISH AND INSTALL CONCRETE FOOTINGS AND ELECTRICAL CONDUIT.
11. 5-PANEL MENU BOARD. SEE SCHEDULES FOR DETAILS.
12. WAYFINDING GRAPHIC ARROW. SEE SITE DETAILS AND SCHEDULES. LANDLORD TO FURNISH AND INSTALL CONCRETE FOOTINGS AND ELECTRICAL CONDUIT.
13. INSTALL NEW BIKE RACK. SEE SCHEDULE FOR DETAILS.
14. NON-ILLUMINATED BOLLARD. SEE SITE DETAILS AND SCHEDULES.
15. "5-MINUTE PARKING" SIGN. SEE SCHEDULE FOR DETAILS.
16. DRIVE THRU DETECTOR LOOP. SEE SITE DETAILS AND SCHEDULE. LANDLORD TO PROVIDE CONDUIT PRIOR TO INSTALLATION OF DRIVE THRU LANE SURFACING.
17. NEW TRASH ENCLOSURE BY LANDLORD. SEE CIVIL DRAWINGS.
18. NEW STRIPING. SEE CIVIL DRAWINGS.
19. PROVIDE PROTECTIVE BOLLARDS ON BOTH SIDES OF EXTERIOR UTILITY SERVICES ADJACENT TO VEHICULAR TRAFFIC. EXAMPLES INCLUDE FIRE STAND PIPE, GAS AND ELECTRICAL METERS, SITE TRANSFORMERS, ETC.
20. PROPOSED MONUMENT SIGN. SEE SITE DETAILS AND SCHEDULES.



STARBUCKS®
2401 UTAH AVENUE SOUTH
SEATTLE, WASHINGTON 98134
(206) 318-1575

THESE DRAWINGS AND THE PROJECT MANUAL ARE CONFIDENTIAL AND SHALL REMAIN THE SOLE PROPERTY OF STARBUCKS CORPORATION, WHICH IS THE OWNER OF THE COPYRIGHT IN THIS WORK. THEY SHALL NOT BE REPRODUCED (IN WHOLE OR IN PART), SHARED WITH THIRD PARTIES OR USED IN ANY MANNER ON OTHER PROJECTS OR EXTENSIONS TO THIS PROJECT WITHOUT THE PRIOR WRITTEN CONSENT OF STARBUCKS CORPORATION. THESE DRAWINGS AND SPECIFICATIONS ARE INTENDED TO EXPRESS DESIGN INTENT FOR A PROTOTYPICAL STARBUCKS STORE (WHICH IS SUBJECT TO CHANGE AT ANYTIME) AND DO NOT REFLECT ACTUAL SITE CONDITIONS. NEITHER PARTY SHALL HAVE ANY OBLIGATION NOR LIABILITY TO THE OTHER (EXCEPT STATED ABOVE) UNTIL A WRITTEN AGREEMENT IS FULLY EXECUTED BY BOTH PARTIES.

STARBUCKS TEMPLATE VERSION: I2021.01.22



1524 Delancey Street
3rd Floor
Philadelphia, PA 19102
office: 215.753.1524
www.bergmannpc.com



ARAM PILIGIAN, JR.

PROFESSIONAL CERTIFICATION: I CERTIFY THAT THESE DOCUMENTS WERE PREPARED OR APPROVED BY ME, AND THAT I AM A DULY LICENSED ARCHITECT UNDER THE LAWS OF THE STATE OF MASSACHUSETTS.
LICENSE NO: 951705
EXPIRATION DATE: 08/31/2023

PROJECT NAME:
HANOVER,
COLUMBIA RD.

PROJECT ADDRESS:
303 COLUMBIA RD.
HANOVER, MA 02339

STORE #: TBD
PROJECT #: 95965-001
ISSUE DATE: 07/29/2022
DESIGN MANAGER: ANNIE SONG
LEED® AP
PRODUCTION DESIGNER: AL
CHECKED BY: HVT

Revision Schedule

Rev	Date	By	Description

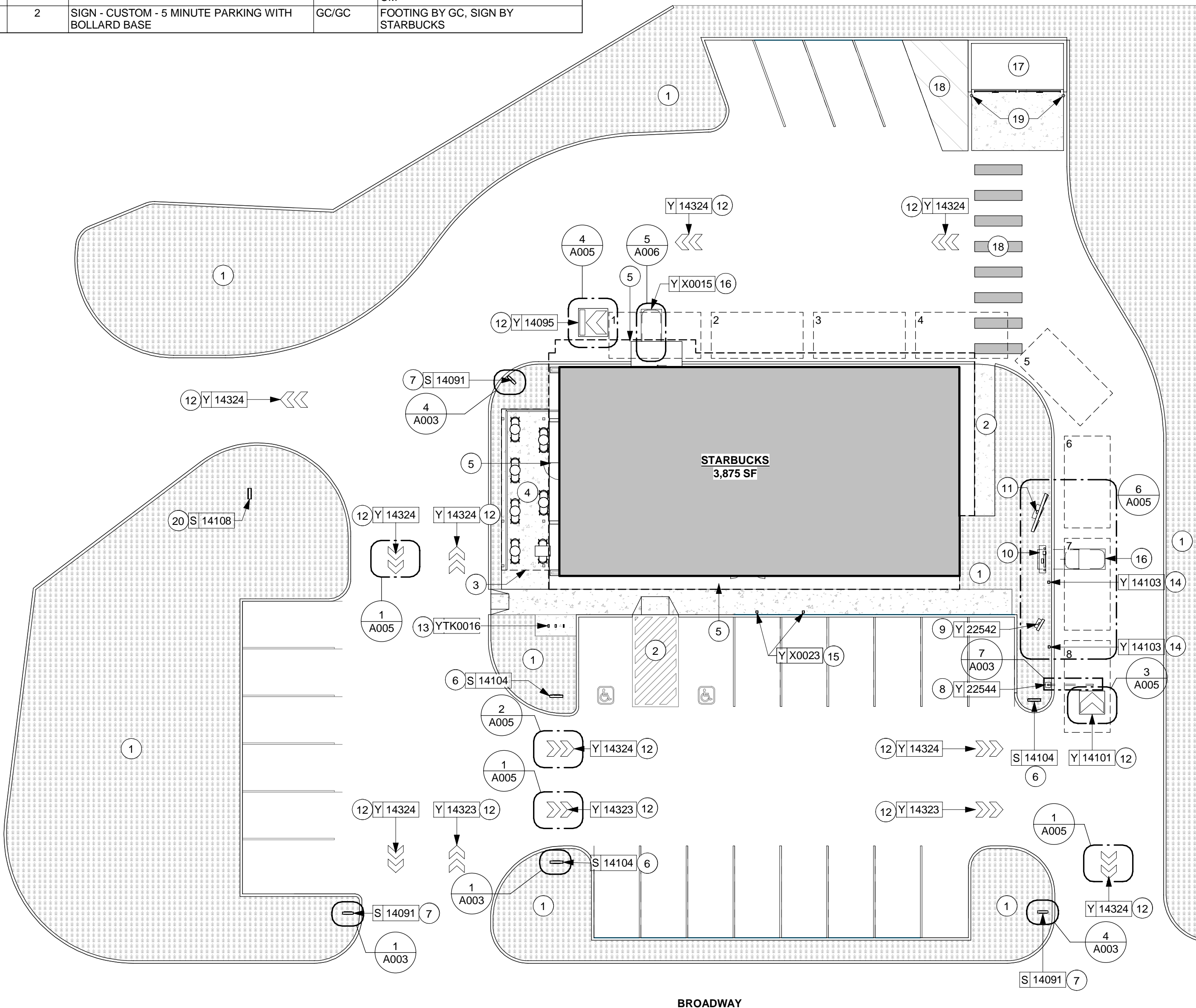
SHEET TITLE:
REFERENCE SITE PLAN

SCALE: AS SHOWN

SHEET NUMBER:
A001

RESPONSIBILITY LEGEND

- GC GENERAL CONTRACTOR
- LL LANDLORD
- SB STARBUCKS
- WH STARBUCKS WAREHOUSE (3PL)
- VD STARBUCKS VENDOR DIRECT



1 SITE PLAN
Scale: 1/16" = 1'-0"



© 2018 STARBUCKS COFFEE COMPANY

STARBUCKS®
2401 UTAH AVENUE SOUTH
SEATTLE, WASHINGTON 98134
(206) 318-1575

THESE DRAWINGS AND THE PROJECT MANUAL ARE CONFIDENTIAL AND SHALL REMAIN THE SOLE PROPERTY OF STARBUCKS CORPORATION, WHICH IS THE OWNER OF THE COPYRIGHT IN THIS WORK. THEY SHALL NOT BE REPRODUCED (IN WHOLE OR IN PART), SHARED WITH THIRD PARTIES OR USED IN ANY MANNER ON OTHER PROJECTS OR EXTENSIONS TO THIS PROJECT WITHOUT THE PRIOR WRITTEN CONSENT OF STARBUCKS CORPORATION. THESE DRAWINGS AND SPECIFICATIONS ARE INTENDED TO EXPRESS DESIGN INTENT FOR A PROTOTYPICAL STARBUCKS STORE (WHICH IS SUBJECT TO CHANGE AT ANYTIME) AND DO NOT REFLECT ACTUAL SITE CONDITIONS. NEITHER PARTY SHALL HAVE ANY OBLIGATION NOR LIABILITY TO THE OTHER (EXCEPT STATED ABOVE) UNTIL A WRITTEN AGREEMENT IS FULLY EXECUTED BY BOTH PARTIES.

STARBUCKS TEMPLATE VERSION: i2021.01.22

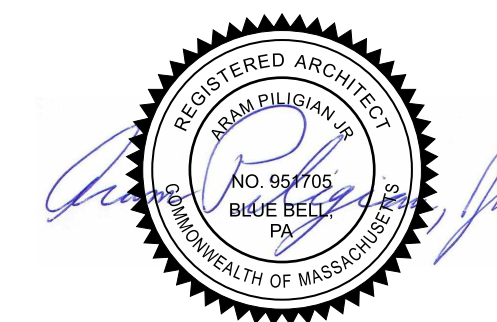


BERGMANN
ARCHITECTS ENGINEERS PLANNERS

Bergmann Architectural Associates, Inc.

1524 Delancey Street
3rd Floor
Philadelphia, PA 19102

office: 215.753.1524
www.bergmannpc.com



ARAM PILIGIAN, JR.

PROFESSIONAL CERTIFICATION: I CERTIFY THAT THESE DOCUMENTS WERE PREPARED OR APPROVED BY ME, AND THAT I AM A DULY LICENSED ARCHITECT UNDER THE LAWS OF THE STATE OF MASSACHUSETTS.
LICENSE NO: 951705
EXPIRATION DATE: 08/31/2023

PROJECT NAME:
**HANOVER,
COLUMBIA RD.**

PROJECT ADDRESS:
**303 COLUMBIA RD.
HANOVER, MA 02339**

STORE #: TBD
PROJECT #: 95965-001
ISSUE DATE: 07/29/2022
DESIGN MANAGER: ANNIE SONG
LEED® AP:
PRODUCTION DESIGNER: AL
CHECKED BY: HVT

Revision Schedule

Rev	Date	By	Description

SHEET TITLE:
DEMO EXTERIOR ELEVATIONS

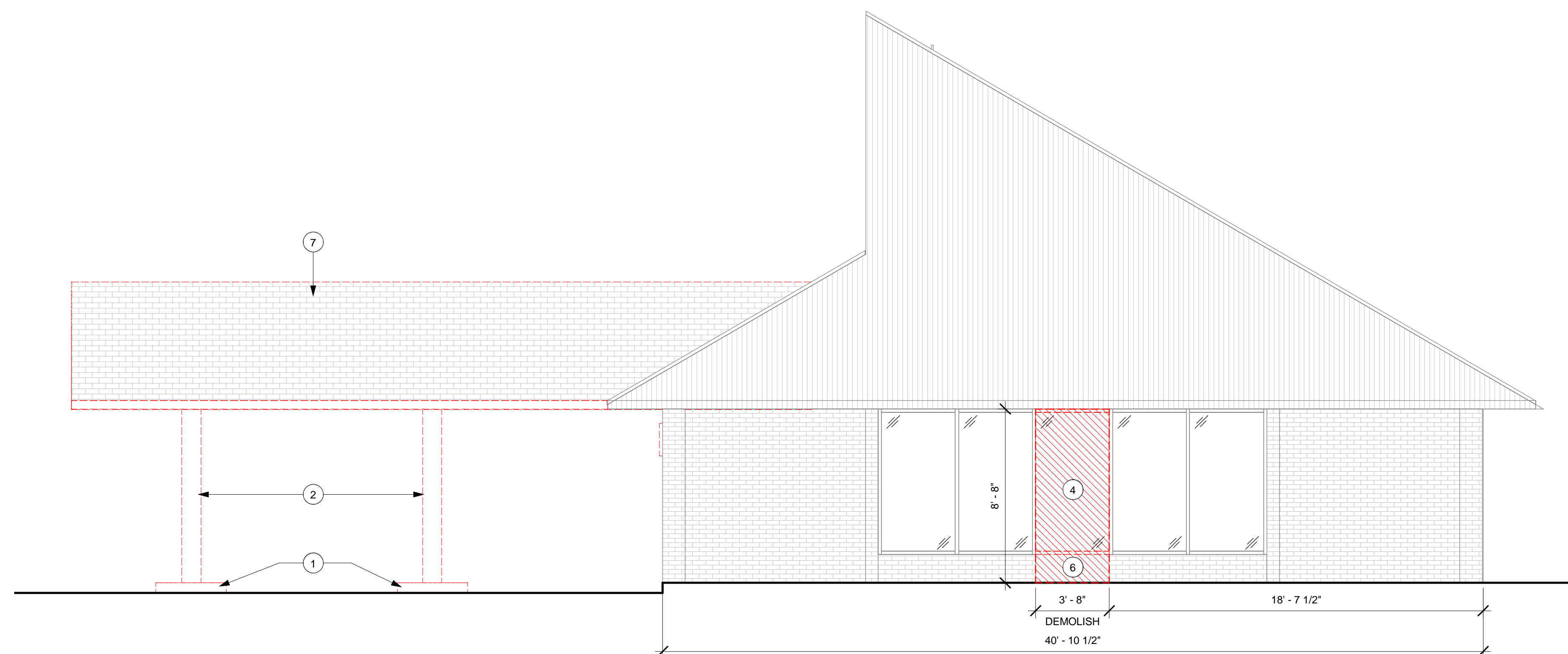
SCALE: AS SHOWN

SHEET NUMBER:

D103

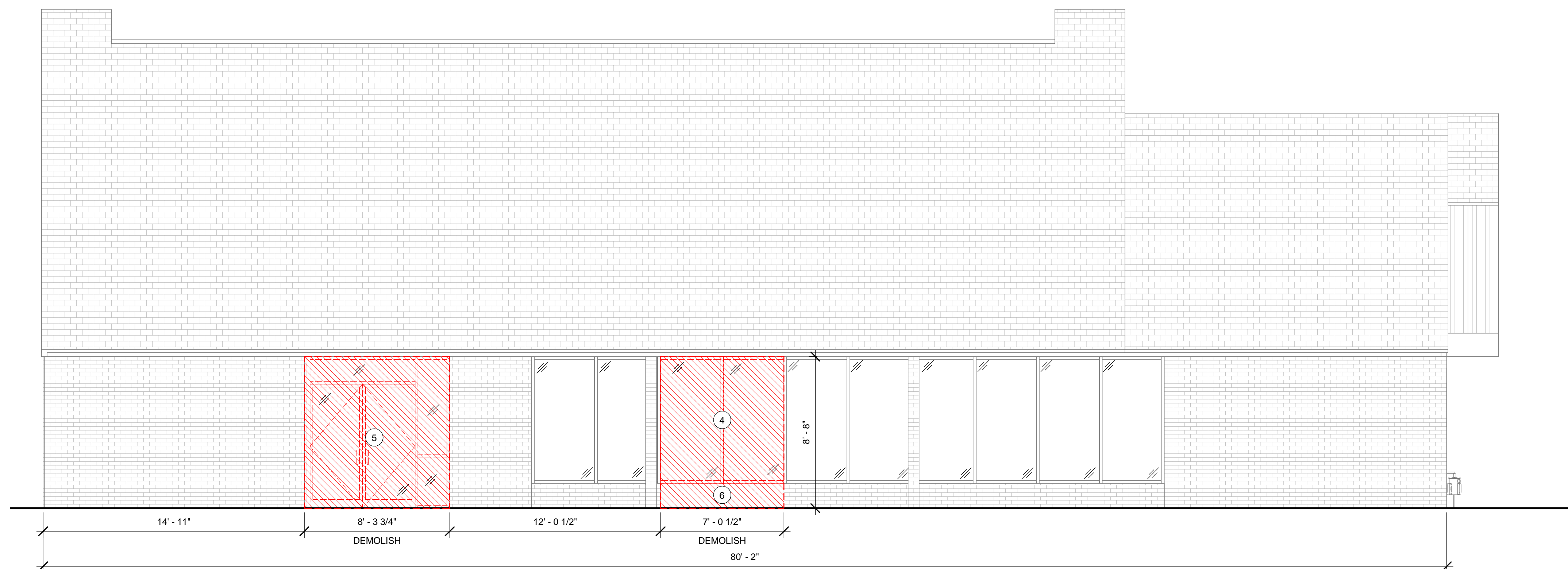
KEYED NOTES

- EXISTING CONCRETE ISLAND, BOLLARDS AND ANY ABANDONED PNEUMATIC TUBE EQUIPMENT TO BE DEMOLISH.
- DEMOLISH EXISTING DRIVE THRU CANOPY COLUMNS.
- DEMOLISH EXISTING BANK DRIVE-THRU WINDOW AS SHOWN IN PREPARATION OF NEW DRIVE THRU WINDOW INSTALLATION.
- DEMOLISH EXISTING STOREFRONT AND ASSOCIATED FASTENERS AS SHOWN.
- DEMOLISH EXISTING STOREFRONT DOOR, STOREFRONT, AND ASSOCIATED FASTENERS. PREPARE FOR INFILL.
- DEMOLISH PORTION OF WALL AS SHOWN.
- DEMOLISH EXISTING DRIVE-THRU CANOPY



2 DEMO EXTERIOR ELEVATION - EAST

Scale: 1/4" = 1'-0"



1 DEMO EXTERIOR ELEVATION - NORTH

Scale: 1/4" = 1'-0"

PERMIT / BID - INTENDED FOR CONSTRUCTION USE



© 2018 STARBUCKS COFFEE COMPANY

STARBUCKS®
2401 UTAH AVENUE SOUTH
SEATTLE, WASHINGTON 98134
(206) 318-1575

THESE DRAWINGS AND THE PROJECT MANUAL ARE CONFIDENTIAL AND SHALL REMAIN THE SOLE PROPERTY OF STARBUCKS CORPORATION, WHICH IS THE OWNER OF THE COPYRIGHT IN THIS WORK. THEY SHALL NOT BE REPRODUCED (IN WHOLE OR IN PART), SHARED WITH THIRD PARTIES OR USED IN ANY MANNER ON OTHER PROJECTS OR EXTENSIONS TO THIS PROJECT WITHOUT THE PRIOR WRITTEN CONSENT OF STARBUCKS CORPORATION. THESE DRAWINGS AND SPECIFICATIONS ARE INTENDED TO EXPRESS STARBUCKS STORE (WHICH IS SUBJECT TO CHANGE AT ANYTIME) AND DO NOT REFLECT ACTUAL SITE CONDITIONS. NEITHER PARTY SHALL HAVE ANY OBLIGATION NOR LIABILITY TO THE OTHER (EXCEPT STATED ABOVE) UNTIL A WRITTEN AGREEMENT IS FULLY EXECUTED BY BOTH PARTIES.

STARBUCKS TEMPLATE VERSION: i2021.01.22



BERGMANN
ARCHITECTS ENGINEERS PLANNERS

Bergmann Architectural Associates, Inc.

1524 Delancey Street
3rd Floor
Philadelphia, PA 19102

office: 215.753.1524
www.bergmannpc.com



ARAM PILIGIAN, JR.

PROFESSIONAL CERTIFICATION: I CERTIFY THAT THESE DOCUMENTS WERE PREPARED OR APPROVED BY ME, AND THAT I AM A DULY LICENSED ARCHITECT UNDER THE LAWS OF THE STATE OF MASSACHUSETTS.
LICENSE NO: 951705
EXPIRATION DATE: 08/31/2023

PROJECT NAME:
**HANOVER,
COLUMBIA RD.**

PROJECT ADDRESS:
303 COLUMBIA RD.
HANOVER, MA 02339

STORE #: TBD
PROJECT #: 95965-001
ISSUE DATE: 07/29/2022
DESIGN MANAGER: ANNIE SONG
LEED® AP:
PRODUCTION DESIGNER: AL
CHECKED BY: HVT

Revision Schedule

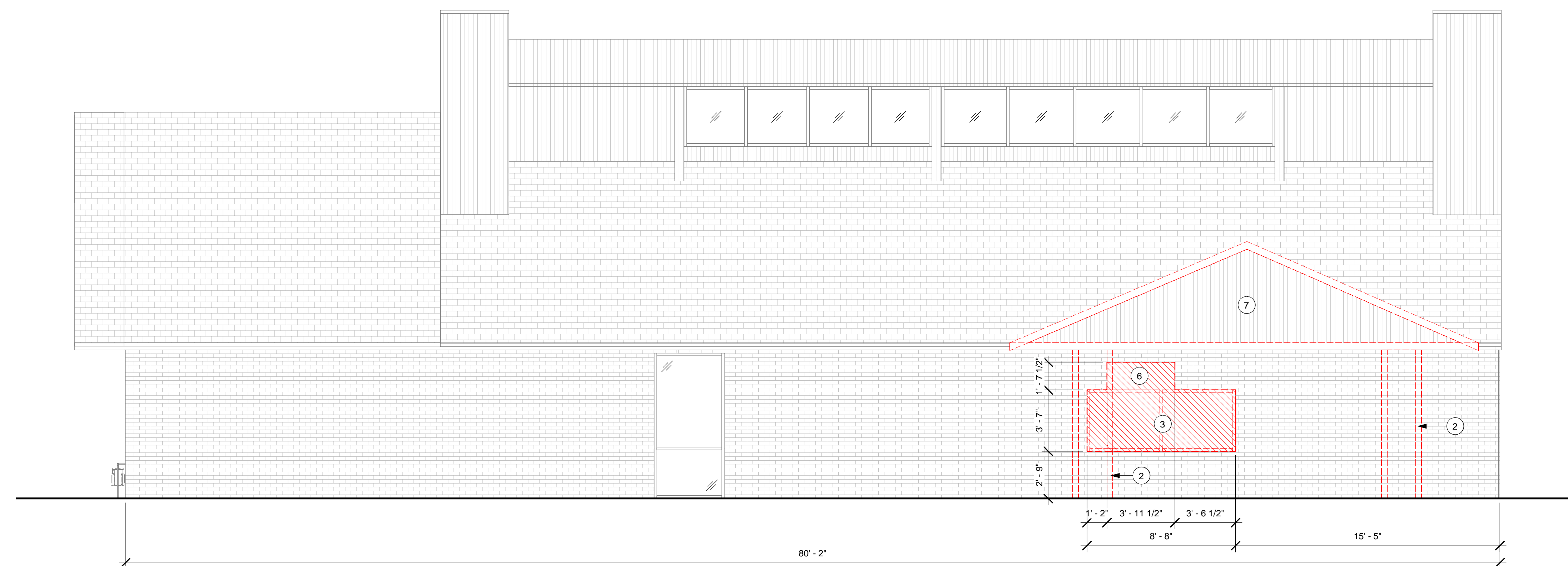
Rev	Date	By	Description

SHEET TITLE:
**DEMO EXTERIOR
ELEVATIONS**
SCALE: AS SHOWN

SHEET NUMBER:
D104

KEYED NOTES

- EXISTING CONCRETE ISLAND, BOLLARDS AND ANY ABANDONED PNEUMATIC TUBE EQUIPMENT TO BE DEMOLISH.
- DEMOLISH EXISTING DRIVE THRU CANOPY COLUMNS.
- DEMOLISH EXISTING BANK DRIVE-THRU WINDOW AS SHOWN IN PREPARATION OF NEW DRIVE THRU WINDOW INSTALLATION.
- DEMOLISH EXISTING STOREFRONT AND ASSOCIATED FASTERENERS AS SHOWN.
- DEMOLISH EXISTING STOREFRONT DOOR, STOREFRONT, AND ASSOCIATED FASTENERS. PREPARE FOR INFILL.
- DEMOLISH PORTION OF WALL AS SHOWN
- DEMOLISH EXISTING DRIVE-THRU CANOPY



1 DEMO EXTERIOR ELEVATION - SOUTH

Scale: 1/4" = 1'-0"

7/29/2022 10:44:30 AM

PERMIT / BID - INTENDED FOR CONSTRUCTION USE

EXTERIOR SIGNAGE SCHEDULE - "S"					
DESIGN ID	COUNT	DESCRIPTION	RESP.	BULB	COMMENTS
SIGNAGE - DISK					
13163	1	SIGN - DISK SF ILLUMINATED FLUSH MOUNTED EVOLVED - 48IN 1220MM	SB/SB		
13164	2	SIGN - DISK SF ILLUMINATED FLUSH MOUNTED EVOLVED - 60IN 1525MM	SB/SB		
SIGNAGE - DRIVE THRU					
14091	4	SIGN - DT DIRECTIONAL EXIT SIGN ILLUMINATED ARROW SERIES - 46IN 1170MM	SB/SB		GC TO COODINATE WITH SB VENDOR; SUPPLIER/INSTALLER: REGIONAL SIGNAGE VENDOR
14099	2	SIGN - DRIVE THRU ILLUMINATED ARROW SERIES FLUSH MOUNTED - RH - 48IN 1220MM	SB/SB		
14104	3	SIGN - DT DIRECTIONAL ILLUMINATED ARROW SERIES WITH LOGO - 46IN 1170MM	SB/SB		GC TO COODINATE WITH SB VENDOR; SUPPLIER/INSTALLER: REGIONAL SIGNAGE VENDOR
14108	1	SIGN - MONUMENT DRIVE THRU ILLUMINATED ARROW SERIES	SB/SB		
22544	1	SIGN - DT CLEARANCE BAR SQUARE FRAME FREESTANDING - BLACK AND DARK GREEN	SB/SB		GC TO COORD. W/ SB VENDOR
SIGNAGE - WORDMARK					
18507	1	SIGN - WORDMARK STARBUCKS ON RACEWAY - 20IN 510MM	SB/SB		WHITE LETTERS

GENERAL NOTES

- GENERAL CONTRACTOR TO COORDINATE AND SCHEDULE SIGNAGE INSTALLATION WITH THE SIGNAGE CONTRACTOR PROVIDING A MINIMUM SCHEDULING NOTICE OF 4 WEEKS AND 1 WEEK PRIOR TO SCHEDULED DATE OF INSTALLATION. CONSTRUCTION MANAGER TO PROVIDE GENERAL CONTRACTOR WITH SIGNAGE CONTRACTOR CONTACT INFORMATION.
- GENERAL CONTRACTOR SHALL COORDINATE WITH ELECTRICAL CONTRACTOR TO FURNISH AND INSTALL ELECTRICAL CIRCUITS INCLUDING ALL CONDUIT, WIRE, CONNECTIONS AND BREAKER AT PANEL BOARD NECESSARY TO SERVE SIGNAGE.
- GENERAL CONTRACTOR TO PROVIDE FIRE TREATED WOOD STUD BLOCKING OR EQUIVALENT TO SUPPORT SIGNAGE.
- SIGNAGE CONTRACTOR SHALL VERIFY SIZE AND LOCATION OF ANY AND ALL ALLOWABLE MONUMENT OR POLE SIGNAGE AND PROVIDE SHOP DRAWING(S) PRIOR TO FABRICATION TO THE STARBUCKS DESIGNER FOR APPROVAL.
- SIGNAGE CONTRACTOR TO INSTALL SIGNAGE IN COMPLIANCE WITH LOCAL CODES AND OBTAIN PERMIT.
- SIGNAGE CONTRACTOR TO SUPPLY SHOP DRAWINGS TO CONSTRUCTION MANAGER AND TO THE GENERAL CONTRACTOR AS NEEDED. GENERAL CONTRACTOR TO NOTIFY CONSTRUCTION MANAGER IMMEDIATELY IF SHOP DRAWINGS OR INSTALLATION IS IN DISCREPANCY WITH ARCHITECTURAL DRAWINGS.
- GENERAL CONTRACTOR TO CLEAN, PATCH AND REPAIR EXISTING EXTERIOR AS REQUIRED.

KEYED NOTES

- PROVIDE 3" (75MM) HIGH BLACK ACRYLIC STORE ADDRESS ON GLAZING OR PER LOCAL JURISDICTIONAL CODE REQUIREMENTS.
- GC TO PROVIDE J-BOX W/ PULL STRING FOR FUTURE BUILDING SIGNAGE. COORDINATE LOCATION OF J-BOX W/ SIGNAGE VENDOR PRIOR TO INSTALL.
- 3/4" MARINE GRADE PLYWOOD BLOCKING FOR EXTERIOR SIGNAGE. EXTEND BLOCKING 8" (205MM) MIN. BEYOND EDGE OF SIGNAGE.
- SIGN VENDOR TO PROVIDE ROOF MOUNTED RACEWAY AND STRUCTURE FOR SIGNAGE.
- NEW ARROW SERIES DT SIGN ON CONCEALED RACEWAY
- NOT USED.
- NOT USED.
- NOT USED.
- METAL CANOPY. SEE REFLECTED CEILING PLAN, ROOF PLAN AND ARCHITECTURAL DETAILS.
- NEW WALL SCONCE. SEE SCHEDULE
- EXISTING STOREFRONT
- NEW STOREFRONT DOOR. SEE SCHEDULE AND DETAILS
- EXISTING BRICK FINISH TO BE PAINTED SW7047
- EXISTING DOOR TO REMAIN. PROVIDE NEW HARDWARE PER SCHEDULE.
- LANDLORD TO PROVIDE AND INSTALL WINDOW SHELF
- GC TO REPAIR EXISTING EAVE ROOF AS REQUIRED DUE TO D.T. CANOPY DEMOLITION.
- NEW RAILING AT OUTDOOR SEATING AREA.
- EXISTING SIDING TO BE PAINTED SW7019
- NEW COLUMN. SEE STRUCTURAL DRAWINGS AND DETAILS
- NOT USED
- NOT USED
- INFILL WALL AT PREVIOUSLY DEMOLISHED STOREFRONT ENTRANCE. TOOTH IN BRICK W/ EXISTING AND PAINT TO MATCH SW7047
- NEW MAPES CANOPY AT DRIVE-THRU WINDOW.
- SIGNAGE CENTERED ON THE DOOR



STARBUCKS®
2401 UTAH AVENUE SOUTH
SEATTLE, WASHINGTON 98134
(206) 318-1575

THESE DRAWINGS AND THE PROJECT MANUAL ARE CONFIDENTIAL AND SHALL REMAIN THE SOLE PROPERTY OF STARBUCKS CORPORATION, WHICH IS THE OWNER OF THE COPYRIGHT IN THIS WORK. THEY SHALL NOT BE REPRODUCED (IN WHOLE OR IN PART), SHARED WITH THIRD PARTIES OR USED IN ANY MANNER ON OTHER PROJECTS OR EXTENSIONS TO THIS PROJECT WITHOUT THE PRIOR WRITTEN CONSENT OF STARBUCKS CORPORATION. THESE DRAWINGS AND SPECIFICATIONS ARE INTENDED TO EXPRESS DESIGN INTENT FOR A PROTOTYPICAL STARBUCKS STORE (WHICH IS SUBJECT TO CHANGE AT ANYTIME) AND DO NOT REFLECT ACTUAL SITE CONDITIONS. NEITHER PARTY SHALL HAVE ANY OBLIGATION NOR LIABILITY TO THE OTHER (EXCEPT STATED ABOVE) UNTIL A WRITTEN AGREEMENT IS FULLY EXECUTED BY BOTH PARTIES.

STARBUCKS TEMPLATE VERSION: i2021.01.22



BERGMANN
ARCHITECTS ENGINEERS PLANNERS
Bergmann Architectural Associates, Inc.
1524 Delancey Street
3rd Floor
Philadelphia, PA 19102
office: 215.753.1524
www.bergmannpc.com



ARAM PILIGIAN, JR.
PROFESSIONAL CERTIFICATION: I CERTIFY THAT THESE DOCUMENTS WERE PREPARED OR APPROVED BY ME, AND THAT I AM A DULY LICENSED ARCHITECT UNDER THE LAWS OF THE STATE OF MASSACHUSETTS.
LICENSE NO: 951705
EXPIRATION DATE: 08/31/2023

PERMIT / BID - INTENDED FOR CONSTRUCTION USE

PROJECT NAME:
**HANOVER,
COLUMBIA RD.**

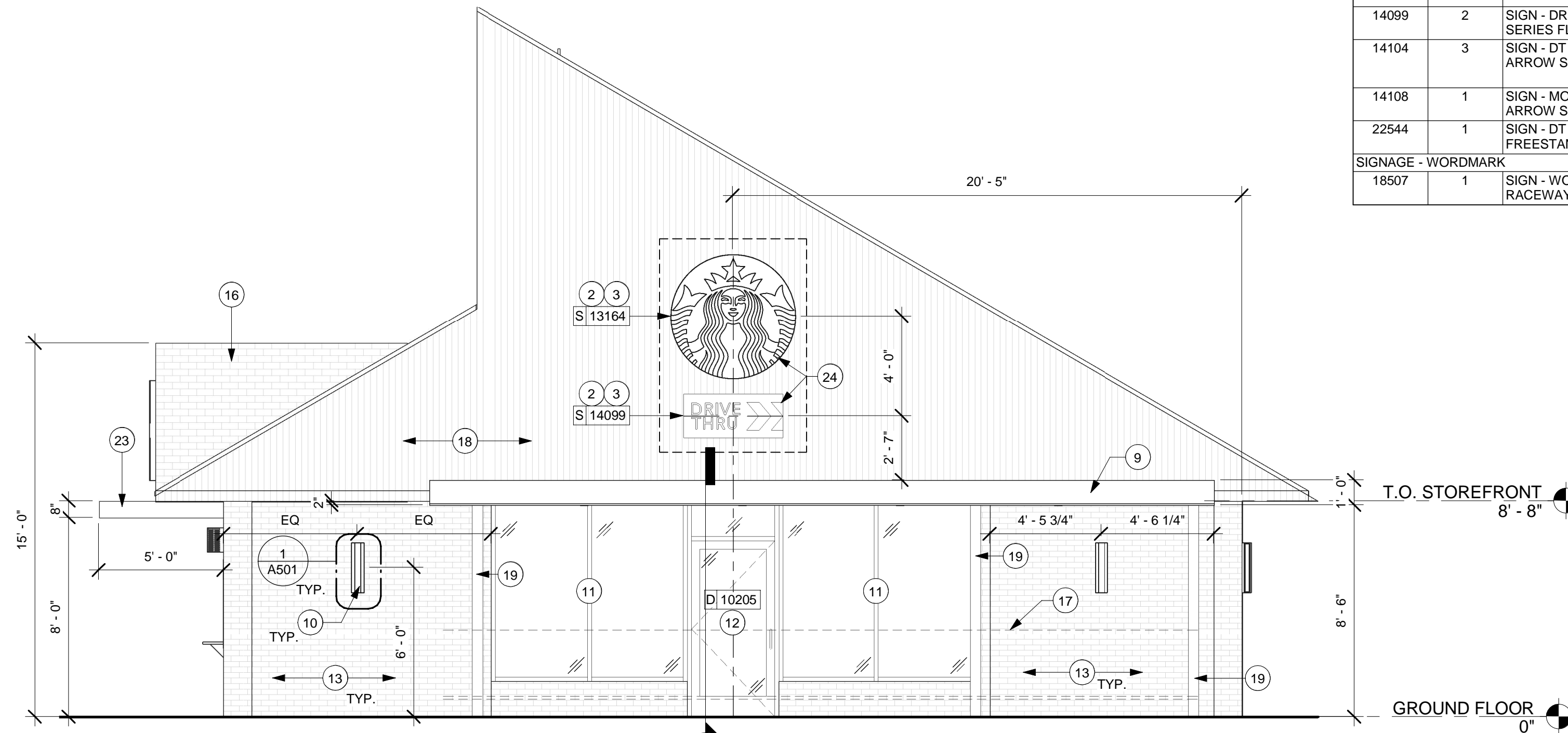
PROJECT ADDRESS:
**303 COLUMBIA RD.
HANOVER, MA 02339**

STORE #: TBD
PROJECT #: 95965-001
ISSUE DATE: 07/29/2022
DESIGN MANAGER: ANNIE SONG
LEED® AP:
PRODUCTION DESIGNER: AL
CHECKED BY: HVT

Revision Schedule			
Rev	Date	By	Description

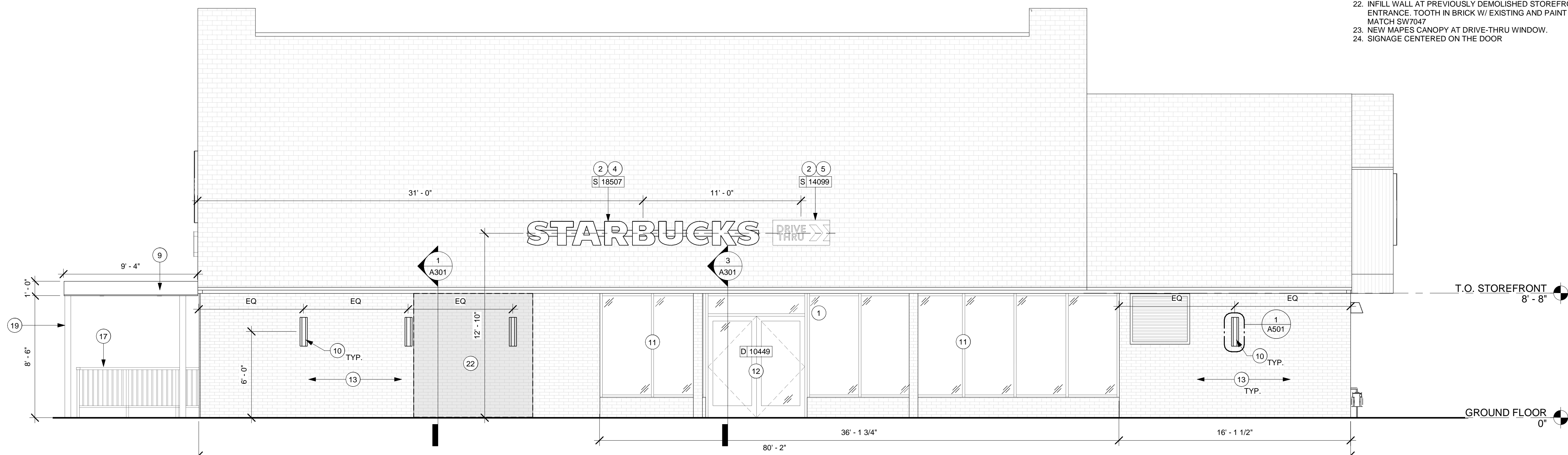
SHEET TITLE:
**BUILDING EXTERIOR
ELEVATIONS**
SCALE: AS SHOWN

SHEET NUMBER:
A201



2 EXTERIOR ELEVATION - SIDE ENTRY

Scale: 1/4" = 1'-0"



1 EXTERIOR ELEVATION - MAIN ENTRY

Scale: 1/4" = 1'-0"



© 2018 STARBUCKS COFFEE COMPANY

STARBUCKS®
2401 UTAH AVENUE SOUTH
SEATTLE, WASHINGTON 98134
(206) 318-1575

THESE DRAWINGS AND THE PROJECT MANUAL ARE CONFIDENTIAL AND SHALL REMAIN THE SOLE PROPERTY OF STARBUCKS CORPORATION, WHICH IS THE OWNER OF THE COPYRIGHT IN THIS WORK. THEY SHALL NOT BE REPRODUCED (IN WHOLE OR IN PART), SHARED WITH THIRD PARTIES OR USED IN ANY MANNER ON OTHER PROJECTS OR EXTENSIONS TO THIS PROJECT WITHOUT THE PRIOR WRITTEN CONSENT OF STARBUCKS CORPORATION. THESE DRAWINGS AND SPECIFICATIONS ARE INTENDED TO EXPRESS DESIGN INTENT FOR A PROTOTYPICAL STARBUCKS STORE (WHICH IS SUBJECT TO CHANGE AT ANYTIME) AND DO NOT REFLECT ACTUAL SITE CONDITIONS. NEITHER PARTY SHALL HAVE ANY OBLIGATION NOR LIABILITY TO THE OTHER (EXCEPT STATED ABOVE) UNTIL A WRITTEN AGREEMENT IS FULLY EXECUTED BY BOTH PARTIES.

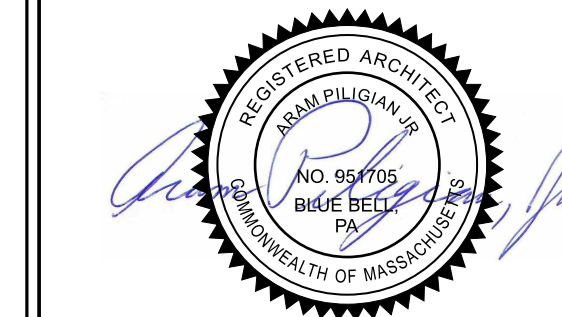
STARBUCKS TEMPLATE VERSION: I2021.01.22



Bergmann Architectural Associates, Inc.

1524 Delancey Street
3rd Floor
Philadelphia, PA 19102

office: 215.753.1524
www.bergmannpc.com



ARAM PILIGIAN, JR.

PROFESSIONAL CERTIFICATION: I CERTIFY THAT THESE DOCUMENTS WERE PREPARED OR APPROVED BY ME, AND THAT I AM A DULY LICENSED ARCHITECT UNDER THE LAWS OF THE STATE OF MASSACHUSETTS.
LICENSE NO: 951705
EXPIRATION DATE: 08/31/2023

PROJECT NAME:
**HANOVER,
COLUMBIA RD.**

PROJECT ADDRESS:
**303 COLUMBIA RD.
HANOVER, MA 02339**

STORE #: TBD
PROJECT #: 95965-001
ISSUE DATE: 0729/2022
DESIGN MANAGER: ANNIE SONG
LEED® AP:
PRODUCTION DESIGNER: AL
CHECKED BY: HVT

Revision Schedule

Rev	Date	By	Description

SHEET TITLE:
**BUILDING EXTERIOR
ELEVATIONS**
SCALE: AS SHOWN

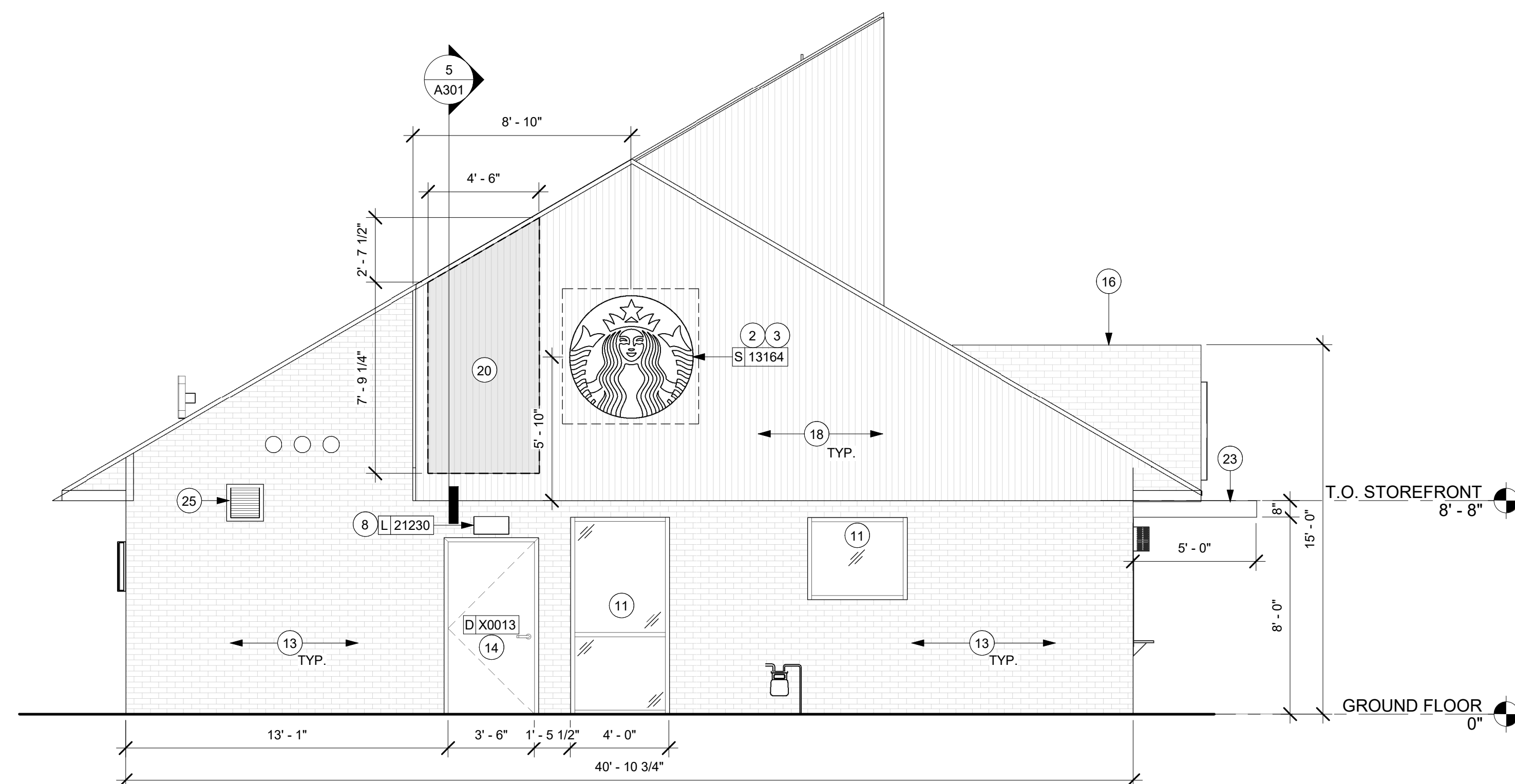
SHEET NUMBER:
A202

GENERAL NOTES

- A. GENERAL CONTRACTOR TO COORDINATE AND SCHEDULE SIGNAGE INSTALLATION WITH THE SIGNAGE CONTRACTOR PROVIDING A MINIMUM SCHEDULING NOTICE OF 4 WEEKS AND 1 WEEK PRIOR TO SCHEDULED DATE OF INSTALLATION. CONSTRUCTION MANAGER TO PROVIDE GENERAL CONTRACTOR WITH SIGNAGE CONTRACTOR CONTACT INFORMATION.
- B. GENERAL CONTRACTOR SHALL COORDINATE WITH ELECTRICAL CONTRACTOR TO FURNISH AND INSTALL ELECTRICAL CIRCUITS INCLUDING ALL CONDUIT, WIRE, CONNECTIONS AND BREAKER AT PANEL BOARD NECESSARY TO SERVE SIGNAGE.
- C. GENERAL CONTRACTOR TO PROVIDE FIRE TREATED WOOD STUD BLOCKING OR EQUIVALENT TO SUPPORT SIGNAGE.
- D. SIGNAGE CONTRACTOR SHALL VERIFY SIZE AND LOCATION OF ANY AND ALL ALLOWABLE MONUMENT OR POLE SIGNAGE AND PROVIDE SHOP DRAWING(S) PRIOR TO FABRICATION TO THE STARBUCKS DESIGNER FOR APPROVAL.
- E. SIGNAGE CONTRACTOR TO INSTALL SIGNAGE IN COMPLIANCE WITH LOCAL CODES AND OBTAIN PERMIT.
- F. SIGNAGE CONTRACTOR TO SUPPLY SHOP DRAWINGS TO CONSTRUCTION MANAGER AND TO THE GENERAL CONTRACTOR AS NEEDED. GENERAL CONTRACTOR TO NOTIFY CONSTRUCTION MANAGER IMMEDIATELY IF SHOP DRAWINGS OR INSTALLATION IS IN DISCREPANCY WITH ARCHITECTURAL DRAWINGS.
- G. GENERAL CONTRACTOR TO CLEAN, PATCH AND REPAIR EXISTING EXTERIOR AS REQUIRED.

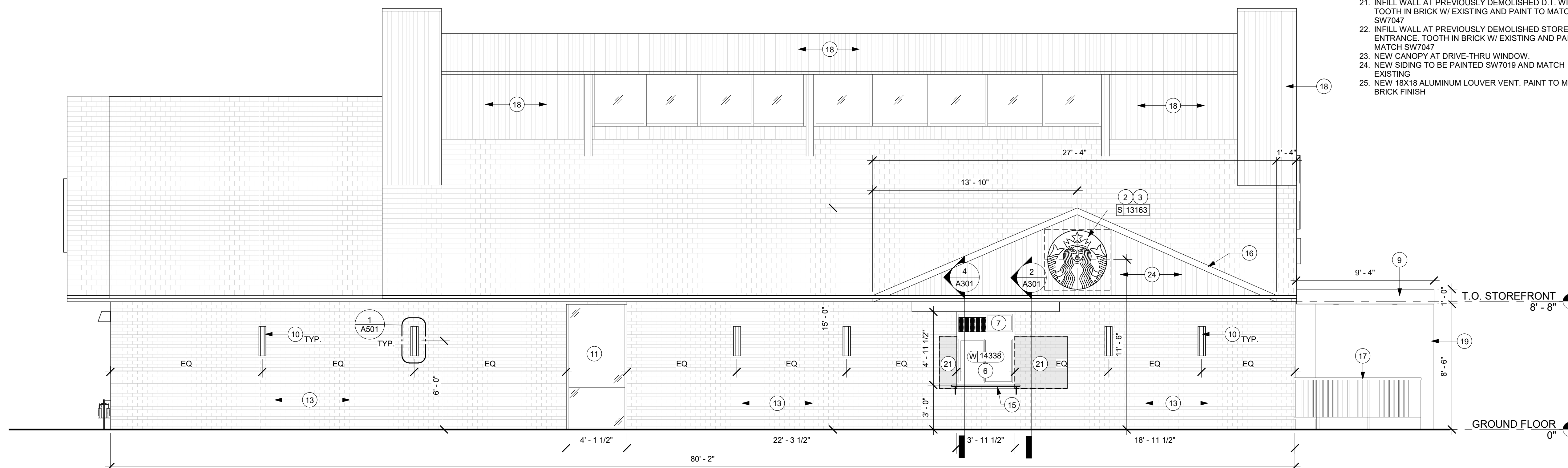
KEYED NOTES

- 1. NOT USED.
- 2. GC TO PROVIDE J-BOX W/ PULL STRING FOR FUTURE BUILDING SIGNAGE. COORDINATE LOCATION OF J-BOX W/ SIGNAGE VENDOR PRIOR TO INSTALL.
- 3. 3/4" MARINE GRADE PLYWOOD BLOCKING FOR EXTERIOR SIGNAGE. EXTEND BLOCKING 8" (205MM) MIN. BEYOND EDGE OF SIGNAGE.
- 4. NOT USED.
- 5. NOT USED.
- 6. FURNISH AND INSTALL TENANT SPECIFIED DRIVE THRU SERVICE WINDOW WITH ALL CONNECTIONS.
- 7. FURNISH AND INSTALL AIR CURTAIN AND FLY FAN AT DRIVE THRU WINDOW.
- 8. FURNISH AND INSTALL SECURITY LIGHT ABOVE ENTRY DOOR.
- 9. METAL CANOPY. SEE REFLECTED CEILING PLAN, ROOF PLAN AND ARCHITECTURAL DETAILS.
- 10. NEW WALL SCONCE. SEE SCHEDULE.
- 11. EXISTING STOREFRONT
- 12. NOT USED.
- 13. EXISTING BRICK FINISH TO BE PAINTED SW7047
- 14. EXISTING DOOR TO REMAIN. PROVIDE NEW HARDWARE PER SCHEDULE.
- 15. LANDLORD TO PROVIDE AND INSTALL WINDOW SHELF
- 16. NEW GABLE ROOF BY GC TO MATCH EXISTING FINISHES.
- 17. NEW RAILING AT OUTDOOR SEATING AREA.
- 18. EXISTING SIDING TO BE PAINTED SW7019
- 19. NEW COLUMN. SEE STRUCTURAL DRAWINGS AND DETAILS.
- 20. NEW INFILL WOOD SIDING FASCIA WALL TO MATCH EXISTING. SEE DETAILS.
- 21. INFILL WALL AT PREVIOUSLY DEMOLISHED D.T. WINDOW. TOOTH IN BRICK W/ EXISTING AND PAINT TO MATCH SW7047
- 22. INFILL WALL AT PREVIOUSLY DEMOLISHED STOREFRONT ENTRANCE. TOOTH IN BRICK W/ EXISTING AND PAINT TO MATCH SW7047
- 23. NEW CANOPY AT DRIVE-THRU WINDOW.
- 24. NEW SIDING TO BE PAINTED SW7019 AND MATCH EXISTING
- 25. NEW 18X18 ALUMINUM LOUVER VENT. PAINT TO MATCH BRICK FINISH



2 EXTERIOR ELEVATION - SIDE

Scale: 1/4" = 1'-0"



1 EXTERIOR ELEVATION - DRIVE-THRU

Scale: 1/4" = 1'-0"

PERMIT / BID - INTENDED FOR CONSTRUCTION USE



© 2018 STARBUCKS COFFEE COMPANY

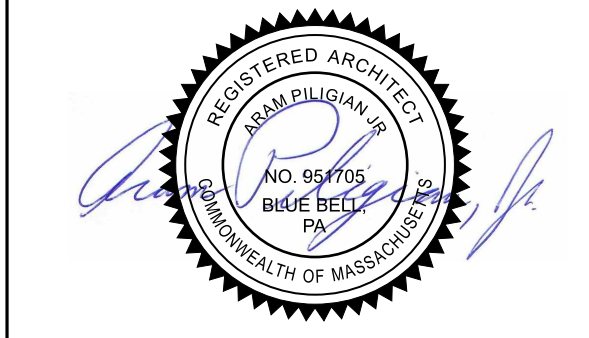
STARBUCKS®
2401 UTAH AVENUE SOUTH
SEATTLE, WASHINGTON 98134
(206) 318-1575

THESE DRAWINGS AND THE PROJECT MANUAL ARE CONFIDENTIAL AND SHALL REMAIN THE SOLE PROPERTY OF STARBUCKS CORPORATION, WHICH IS THE OWNER OF THE COPYRIGHT IN THIS WORK. THEY SHALL NOT BE REPRODUCED (IN WHOLE OR IN PART), SHARED WITH THIRD PARTIES OR USED IN ANY MANNER ON OTHER PROJECTS OR EXTENSIONS TO THIS PROJECT WITHOUT THE PRIOR WRITTEN CONSENT OF STARBUCKS CORPORATION. THESE DRAWINGS AND SPECIFICATIONS ARE INTENDED TO EXPRESS DESIGN INTENT FOR A PROTOTYPICAL STARBUCKS STORE (WHICH IS SUBJECT TO CHANGE AT ANYTIME) AND DO NOT REFLECT ACTUAL SITE CONDITIONS. NEITHER PARTY SHALL HAVE ANY OBLIGATION NOR LIABILITY TO THE OTHER (EXCEPT STATED ABOVE) UNTIL A WRITTEN AGREEMENT IS FULLY EXECUTED BY BOTH PARTIES.

STARBUCKS TEMPLATE VERSION: i2021.01.22



BERGMANN
ARCHITECTS ENGINEERS PLANNERS
Bergmann Architectural Associates, Inc.
1524 Delancey Street
3rd Floor
Philadelphia, PA 19102
office: 215.753.1524
www.bergmannpc.com



ARAM PILIGIAN, JR.
PROFESSIONAL CERTIFICATION: I CERTIFY THAT THESE DOCUMENTS WERE PREPARED OR APPROVED BY ME, AND THAT I AM A DULY LICENSED ARCHITECT UNDER THE LAWS OF THE STATE OF MASSACHUSETTS.
LICENSE NO: 951705
EXPIRATION DATE: 08/31/2023

PROJECT NAME:
**HANOVER,
COLUMBIA RD.**

PROJECT ADDRESS:
303 COLUMBIA RD.
HANOVER, MA 02339

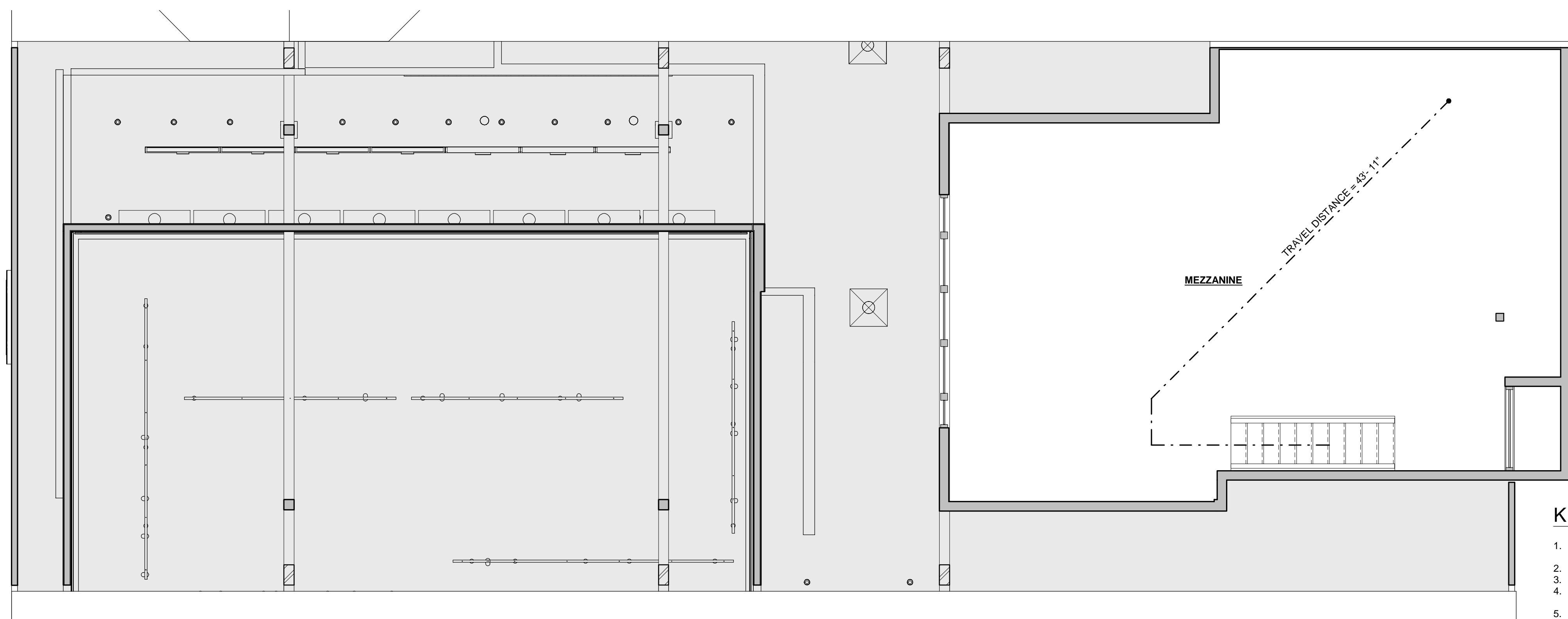
STORE #: TBD
PROJECT #: 95965-001
ISSUE DATE: 07/29/2022
DESIGN MANAGER: ANNIE SONG
LEED® AP:
PRODUCTION DESIGNER: AL HVT
CHECKED BY:

Revision Schedule			
Rev	Date	By	Description

SHEET TITLE:
**LIFE SAFETY
ACCESSIBILITY PLAN**
SCALE: AS SHOWN

SHEET NUMBER:
G002

PERMIT / BID - INTENDED FOR CONSTRUCTION USE



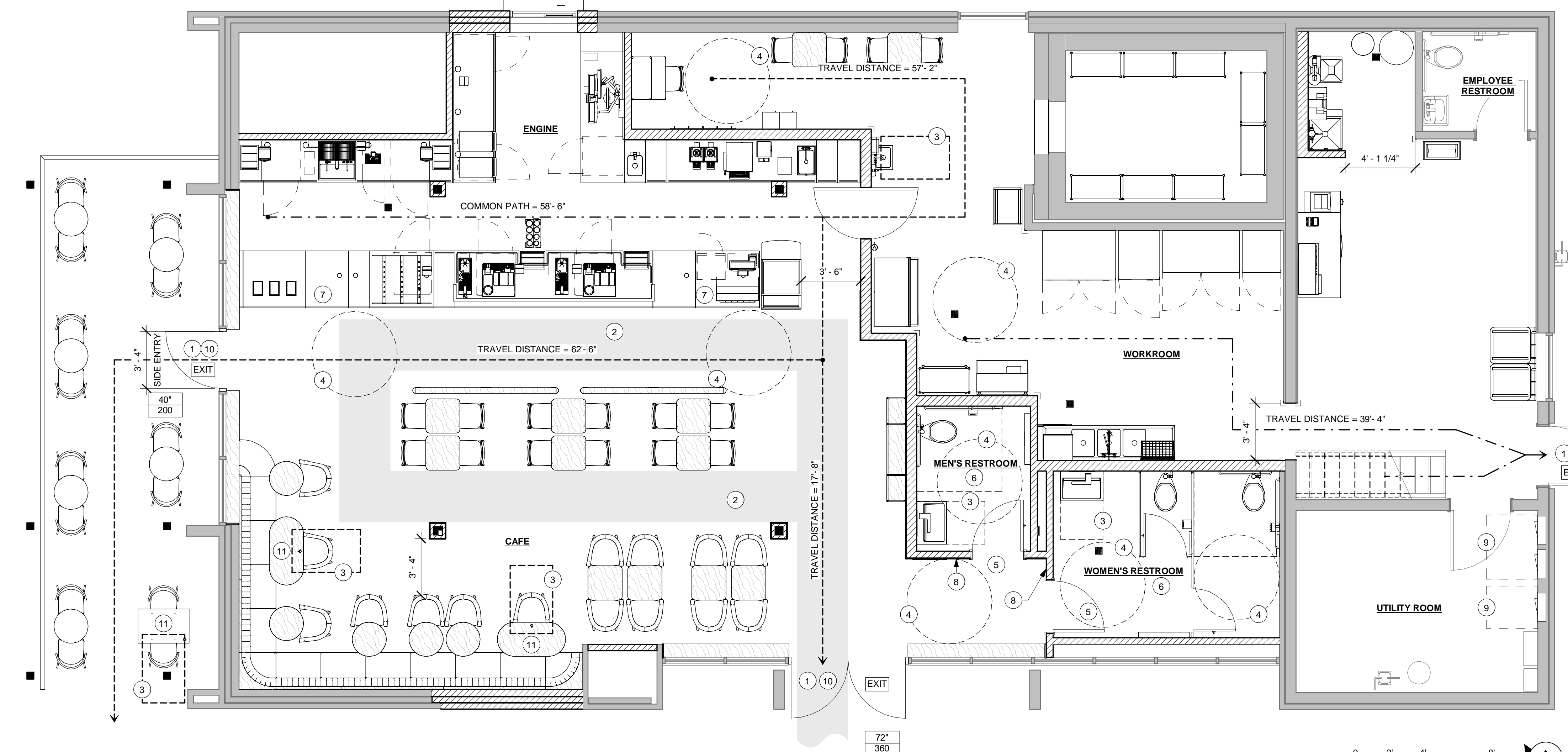
2 MEZZANINE LIFE SAFETY ACCESSIBILITY PLAN
Scale: 1/4" = 1'-0"

KEYED NOTES

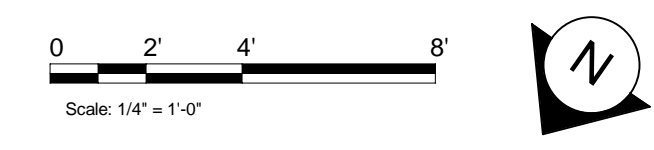
1. THRESHOLDS TO BE BARRIER FREE COMPLIANT PER ALL APPLICABLE CODES.
2. BARRIER-FREE PATH OF TRAVEL.
3. 30" (150 MM) X 48" (1220 MM) CLEAR FOR WHEELCHAIR ACCESS.
4. 60" (1525 MM) DIAMETER MINIMUM TURN RADIUS FOR WHEELCHAIR ACCESS.
5. 32" (815 MM) MINIMUM CLEAR AT RESTROOM DOOR.
6. SEE ENLARGED RESTROOM PLAN AND ELEVATIONS SHEET (I401) FOR ADDITIONAL INFORMATION ON ACCESSIBLE RESTROOM CLEARANCES.
7. POS TRANSACTION PLANE, CONDIMENT CART TOP AND HAND-OFF PLANE ARE 34 INCHES (860 MM) ABOVE THE FINISHED FLOOR FOR WHEELCHAIR ACCESSIBILITY.
8. PROVIDE BARRIER-FREE SIGNAGE AT ADA RESTROOMS PER ALL APPLICABLE CODES.
9. 36 INCH (915 MM) CLEAR FOR ELECTRICAL PANEL ACCESS.
10. PROVIDE TACTILE "EXIT" SIGNAGE.
11. PROVIDE INTERNATIONAL SYMBOL OF ACCESSIBILITY SIGN.

LEGEND

- ← X-X (XXXX) TRAVEL DISTANCE
- █ BARRIER FREE PATH OF TRAVEL (MIN 3'-0" (915MM) - NO PINCH POINT)
- ⊕ EMERGENCY LIGHT
- EXIT SIGN
- 🔥 FIRE EXTINGUISHER
- ADA ACCESSIBLE SEATING 36" (915MM) X 48" (1220MM) CLEAR AREA
- 36" CLEAR EGRESS WIDTH
- 180 MAX. EGRESS LOAD



1 LIFE SAFETY ACCESSIBILITY PLAN
Scale: 1/4" = 1'-0"



7/29/2022 10:44:59 AM