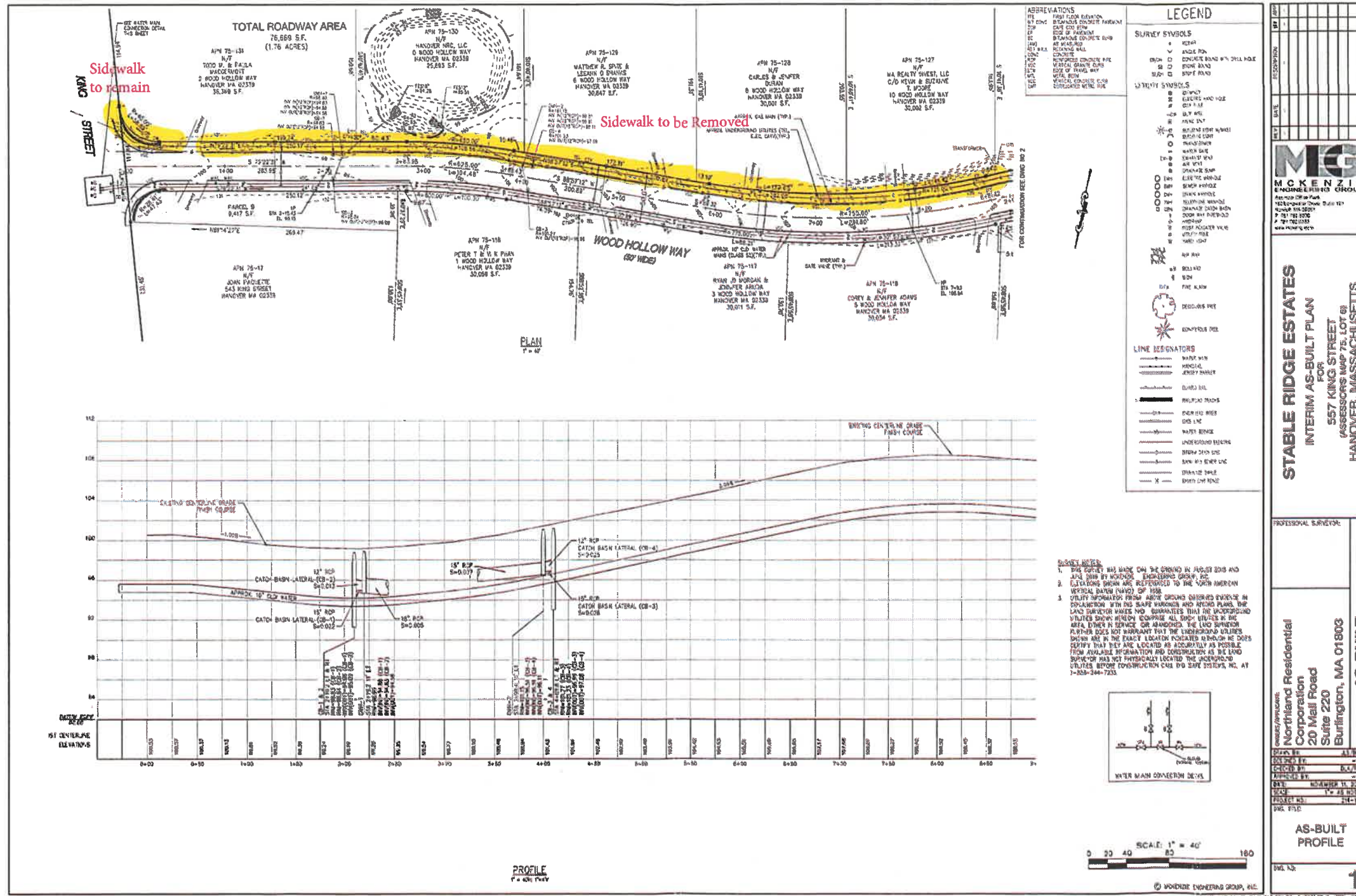
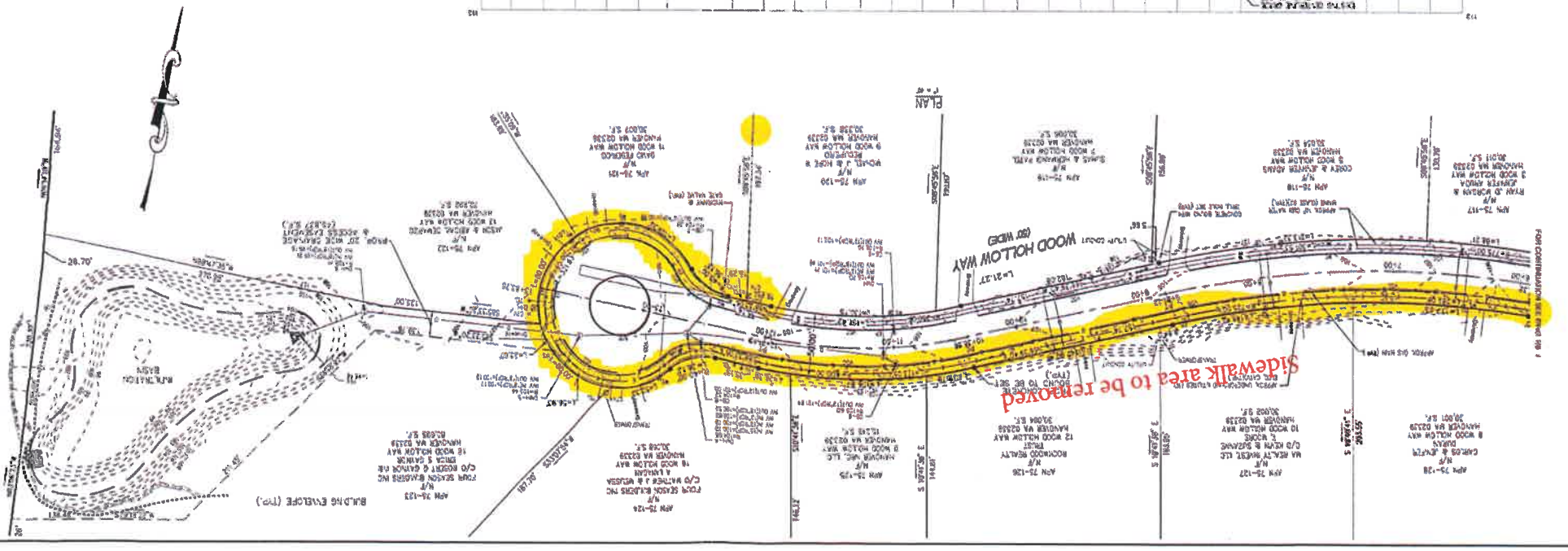
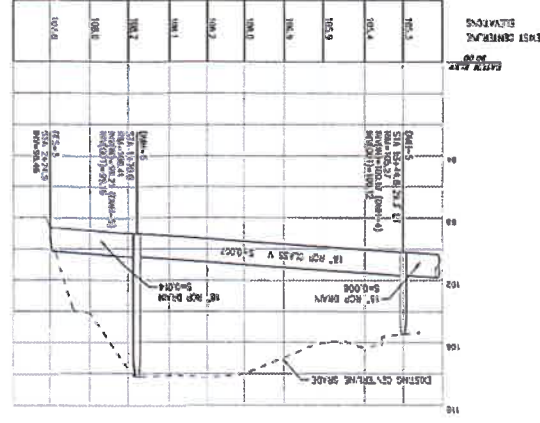
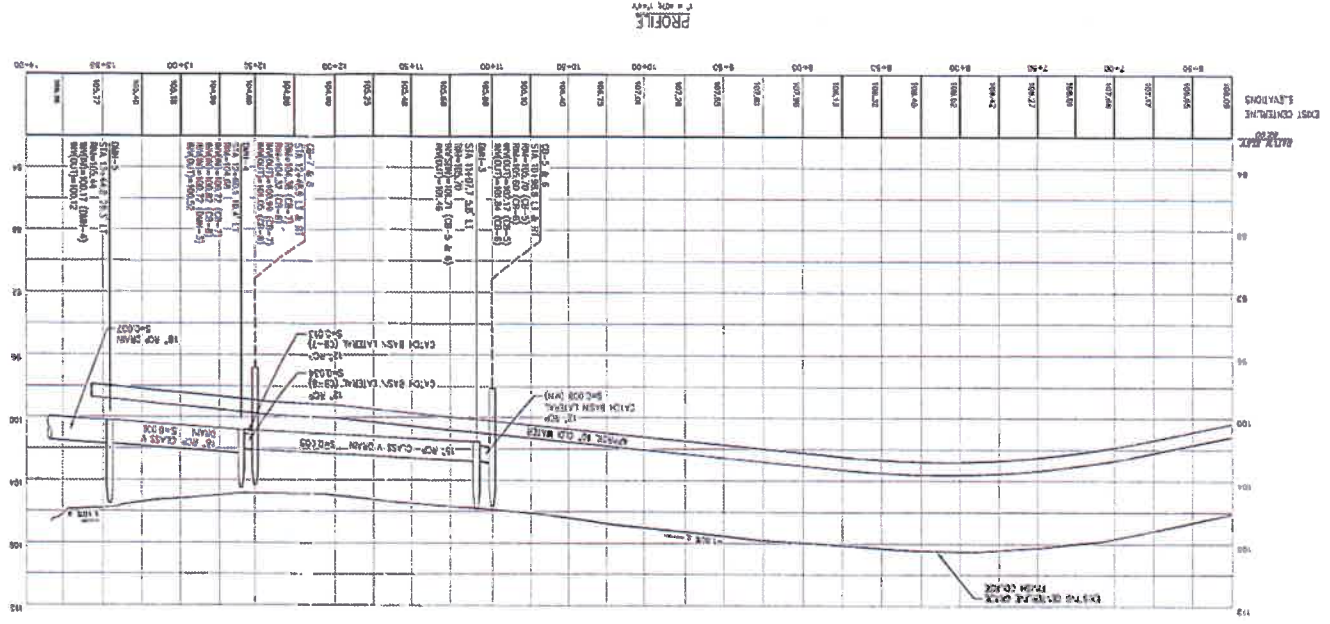


Stable Ridge Estates - Wood Hollow Way - Sidewalk Removal Plan - 8.10.22



- OVER ->



**AS-BUILT PROFILE**

**AS-BUILT**

**STABLE RIDGE ESTATES**  
**INTERIM AS-BUILT PLAN**  
 FOR  
**557 KING STREET**  
 (ASSESSORS MAP 75 LOT 6)  
**HANOVER, MASSACHUSETTS**

**MG**

ENGINEERING GROUP

1000 CENTRE STREET, SUITE 100  
 HANOVER, MA 01827  
 TEL: 978-281-8888  
 FAX: 978-281-8889  
 WWW.MGENGINEERING.COM